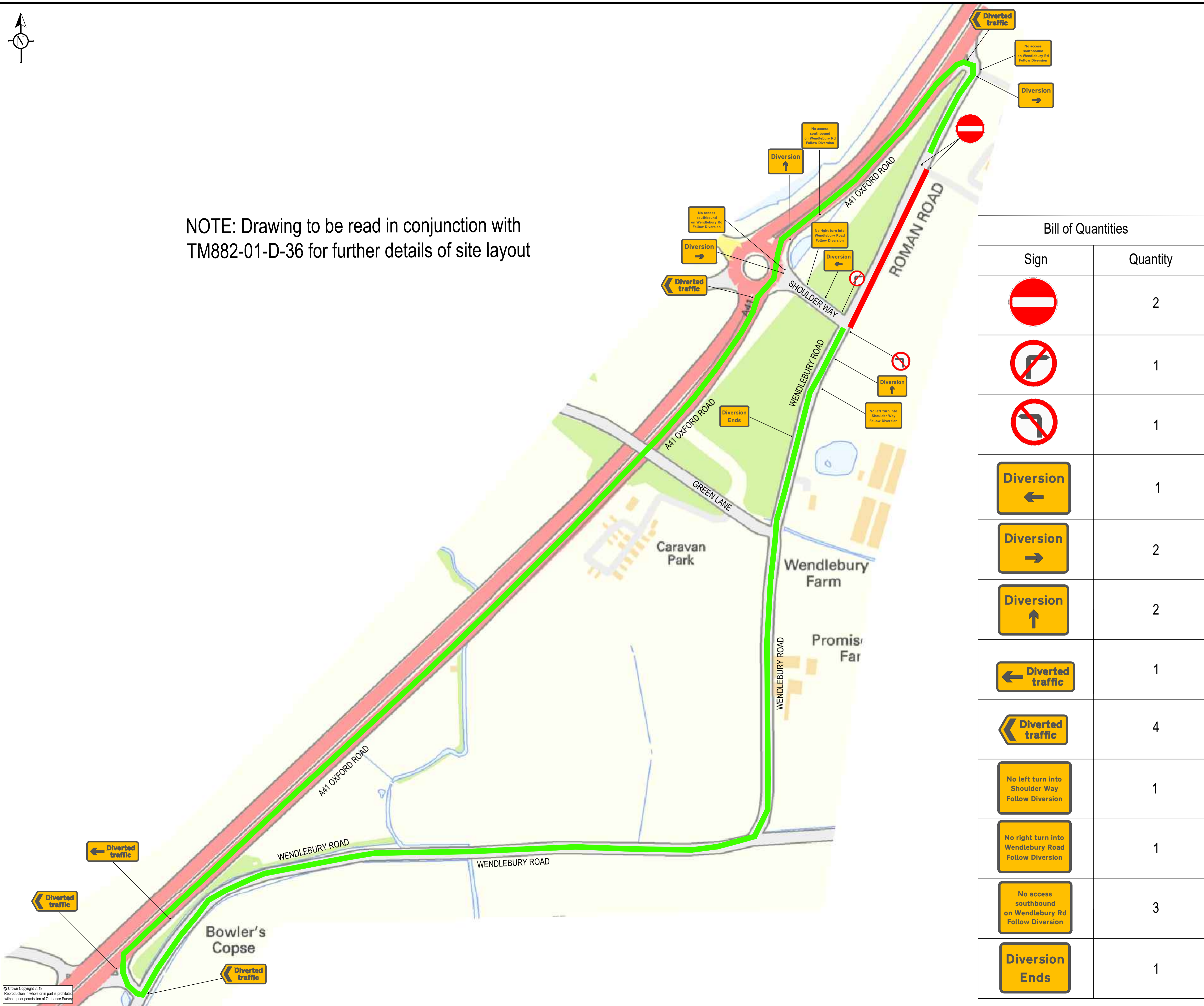




NOTE: Drawing to be read in conjunction with TM882-01-D-36 for further details of site layout



Bill of Quantities	
Sign	Quantity
	2
	1
	1
	1
	2
	2
	1
	4
	1
	1
	3
	1

- NOTES:
- 1) All dimensions are in millimetres, unless stated otherwise.
 - 2) Do not scale from this drawing.
 - 3) Temporary Road Closure Signing to "The Traffic Signs Regulations and General Directions 2016"
 - 4) All signing to be erected to "The Traffic Signs Manual Chapter 8" guidelines.
 - 5) This drawing may not show the normal roadworks signing that will be required (Refer to The "Traffic Signs Manual Chapter 8").

KEY:

- Directional Southbound Closure
- Proposed Diversion Route
- Sign Location and Rotation

REVISIONS:			
REV	DESCRIPTION	INITIALS	DATE

PROJECT: BICESTER GATEWAY DEVELOPMENT
 TEMPORARY TRAFFIC MANAGEMENT
 TITLE: WENDLEBURY ROAD, BICESTER, OXFORD, OX25 2NY
 DIRECTIONAL CLOSURE DIVERSION
 SHEET 2 OF 2

Capital TRAFFIC
 The Old Council Yard, Heddingham Road
 Great Yeldham, Essex. CO9 4HS
 t:01787 237509 e:info@capitaltraffic.co.uk

CLIENT:

DESIGNED BY: BK	DRAWN BY: BK
CHECKED BY: AS	SCALE: NTS @ A1
DATE: 27/06/2019	DRAWING No: TM882-01-D-37

© Crown Copyright 2019
 Reproduction in whole or in part is prohibited
 without prior permission of Ordnance Survey